

THE PAWW

USER GUIDE



The Paww.

The Paww is lightweight and breathable like clothing, and has a range of easily interchangeable tools designed specifically for the activities that you love.

Cuff

Tightens around wrist

Velcro straps

Adjustable

Sleeve

Soft, breathable



Tool

Interchangeable

Tool

Rotates

Foam Insert

Removable to hold smaller objects

What comes in your package:

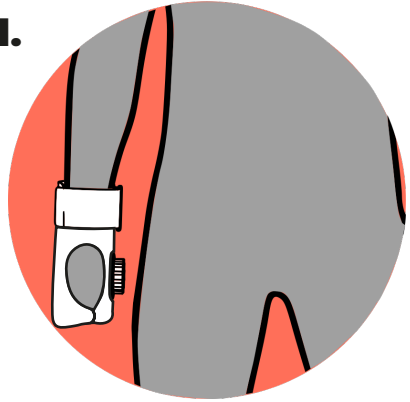
- **The Paww** – read this booklet to find out how to put it on
- **A Tool** – read this booklet to find out how to put on and take off tools
- **Two pieces of white foam** – these can be used to strap into your tool to hold smaller, more precise items like pens and cutlery
- **User Guide** – this is the user guide, please read to find out more!
- **Tool User Guide** – tells you how to use your chosen tool!

Getting started with your Paww.

How to wear your Paww:

Loosen the straps and slide the Paww on. The dock/ tool should be facing inwards towards the body as shown in the diagram (1).

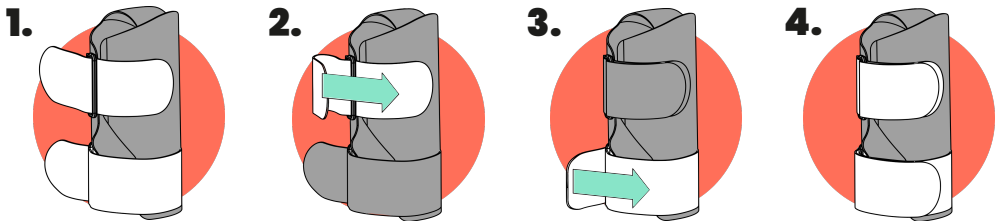
1.



How to tighten your Paww:

Pull the velcro straps (2&3) until the Paww is comfortably tight around your wrist and hand.

To loosen the straps and remove the Paww, pull the velcro straps in the opposite direction and loosen them.



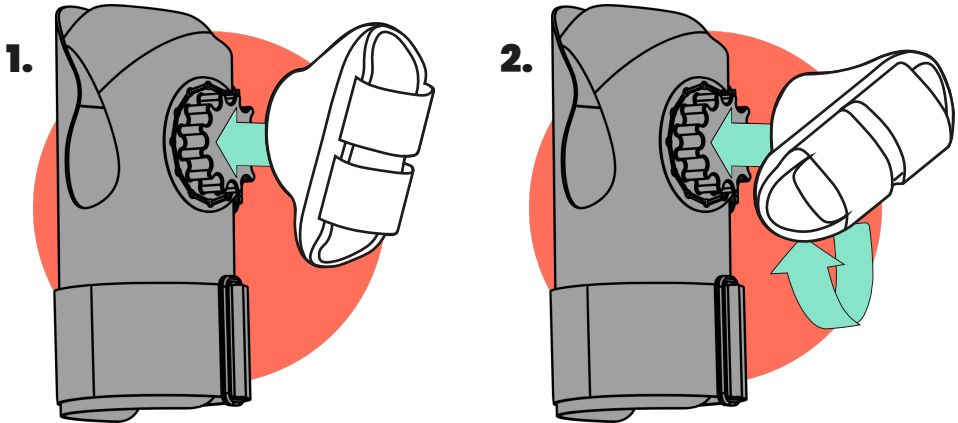
Using your Paww.

How to use a tool with your Paww:

There are lots of tools that can be attached to the sleeve which serve different purposes

The tools clip onto the Paww (1) as shown in the diagrams below. To take the tool off, simply pull it in the opposite direction.

The tools are designed so that they can be attached at various angles (2) onto the sleeve.



Taking care of your Paww.

Safety

- Ensure the sleeve is comfortable and not overtightened
- Check your arm regularly to ensure there is no redness and irritations
- If the Paww causes marking on your skin that does not go away after 20 minutes then the sleeve is too tight and should be loosened
- Ensure the end of your limb is at the front of the sleeve
- Make sure the Paww is the right way up - with the tool dock sitting on the inside of your hand.
- Keep the sleeve and tools away from fire
- Keep the sleeve and tools away from high power/speed machinery
- Do not attempt to lift or carry objects heavier than 0.5kg
- Designed for home use - do not use for extreme sports
- Mind your fingers when attaching tools
- Be aware the sleeve and tools product contains magnets, keep a safe distance between (50mm +) the magnets and all objects that can be damaged by magnetism

Maintenance and cleaning

- Wash the Paww at 30°
- Remove tools before washing
- Wipe tools with damp cloth to clean
- Store the sleeve and tools somewhere dry

Returning your Paww

If there are any issues with your Paww or tools contact your **Limb Buddy** right away and they will do their best to resolve the issue, replace the product or offer a full refund.

Social Media

If you would like to get or share some inspiration of ways to use your tools please follow us on social media and join our private Facebook Group:

Facebook Group:	Facebook Page:	Instagram:	Twitter:	YouTube:
Koalaa Community	@Koalaa	@Koalaa Community	@Koalaa Community	Koalaa

Regulation compliance of your Paww

The Paww has been awarded the following CE mark:

Medical Device Regulation MDR, EU 2017/745 Regulation

This means it conforms with health, safety and environmental standards for products sold within the European Economics Area

The Paww

Please contact your Limb Buddy if you have any questions or problems with your Paww or tools. We hope you love using it and would love to see any photos or videos you take while using it!

